



Pett & Pett Level News
March 2025

Pett and Pett Level News



March 2025

DIRECTORY OF ADVERTISERS			
BESPOKE FURNITURE		LOCAL PRODUCE SUPPLIERS	
Jennings-Bramly Furniture	12	The Old Butcher's Shop	24
EAT, DRINK, STAY		PEST CONTROL	
Bramley & Teal Holiday Cottages	8	Rother Pest Control	44
Coastguard Cafe	36	Wanedale Pest Control	46
New Beach Club	40	PETS & LIVESTOCK	
The Royal Oak Pub	16	Hayley's Hounds	42
GARDEN SERVICES		PLUMBING & ELECTRICAL	
1066 Tree Care	50	A A Farnes	42
Dans Fencing	34	A and O Boilers & Plumbing Services	20
PJ Turner	50	Hannington-Gilbert Electricians	48
Toby Sims Gardener	20	Travis Electrical	12
HEALTH & WELLBEING		PROFESSIONAL SERVICES	
Country Carers	38	Charles & Co (Estate Agents)	22
Country Carers - We Are Hiring	26	Funnell & Perring (Solicitor)	44
Dawn Turner - Holistic Therapy	8	Hastings & Rother Legal Services Ltd	36
Eyemasters	48	KP & Co Ltd (Architect)	46
Five Villages	10	Lyn Cooke Associates (Wills/probate)	38
Food Intolerance Testing	50	Rush, Witt & Wilson (Estate Agents)	32
St Michael's Hospice	6	Your life story in a book (Biographer)	20
Tara Begbie Footcare	42	PROPERTY MAINTENANCE	
Whitegates Care Home	14	KR Windows	24
Yoga For All	40	Alan Danskin - Your Local Handyman	6
HOUSEHOLD SERVICES		Handyman - TW Services	
Bargain Carpets & Floors	34	Lee Bowdler - Painting & Decorating	46
Conquest Cleaning	42	STONEMASONS	
Events-Travel	44	Yew Tree Stone	46
S.T Locksmiths	6	VEHICLE SERVICE & REPAIRS	
Surelock Homes - Locksmith	10	Gem Auto	26
Telly Addicts	44		
Advertising rates (year/month): Full page £220 / £20 ; Half Page £110 / £10 ; Quarter Page £55 / £5			
ALSO IN THIS EDITION:			
Bus Timetables			55
Contacts for Village Groups and Room Hire			53
Council Responsibilities & Contacts			52
Emergency Contacts for Utilities			54
Local Services			52
Tide Times			51

Front Cover: Amanda Leeson

Editors: Donna Gilbert, 01424 812185; Louisa Tasker, 01424 902469; **Advertising:** Stella Dunn, 07947 402122; **Deliveries:** Sarah Adams, 01424 812323. The magazine is distributed by our team of volunteers to all households in Pett & Pett Level. All editions of the magazine are available for download from pettnet.org.uk

EMAIL US AT magazine@pettnet.org.uk

DEADLINES:

COPY (LETTERS, ARTICLES, ETC) - MID-DAY THE 15TH OF EACH MONTH

Adverts (new, changes, payments) - MID-DAY THE 1ST of each month

COPY: must be sent, by email, to magazine@pettnet.org.uk. If you want to provide something handwritten, please contact us first otherwise it may not be printed. Copy must be accompanied by your name, address, and phone number. Where pictures are used it is the responsibility of the author to ensure that permissions have been granted. When submitting letters the writer should give due consideration before naming individuals, either directly or by implication. No letter will be published anonymously. We reserve the right, at our sole discretion, to cut, crop, edit or not publish any copy received.

PUBLISHERS: Pett & Pett Level News is published by Pett Parish. Every reasonable effort has been made to ensure the accuracy of the information supplied herein. However, neither the publishers or the news team can be held responsible for any errors or omissions (E&OE). Unless otherwise indicated, opinions expressed herein are those of the authors of the individual letters, articles, announcements, and adverts, and they do not necessarily represent the views of the publishers or the news team. Neither the publishers or the news team can uphold or recommend any advertiser here within this publication.

Pett & Pett Level News is printed by Impression IT, St Leonards, 01424 852116

500 CLUB

**PETT
VILLAGE
HALL**

Draw Date: 5th February 2025

- 1st: Barbara Cannan
- 2nd: David Jenner
- 3rd: Colin and Laurain Chapman

Pett Village Hall is a Registered Charity in England and Wales No 1005693

We have a big issue for you this month! As Spring approaches after what seems like a very long, grey winter, it feels as if there is a reawakening and we are keen to get outdoors and reconnect. In spite of world events there is a lot to look forward to on a local level; better weather, longer days and the chance to get outside and enjoy all that spring traditionally offers us. With that in mind, please take the time to comment on the Rights of Way Access plan public survey (see page 11). We all have the right to enjoy the countryside but we know that some people find access difficult due to things such as overgrown paths, high stiles and other accessibility issues. If so, please use this opportunity to comment.

At a tea held at the Village Hall recently we enjoyed the opportunity to meet and say thank you to those who venture out in all weathers to deliver this magazine to you, and to those who write for us purely for the pleasure of writing. We are so grateful to you all and it was nice to put faces to names.

Sadly there were no takers for our request for someone to write a regular gardening column for this magazine. If this is something you were considering, please do get in touch.

Donna and Louisa



PLIRB IS RECRUITING!

Join our team | build our future

- Are you looking for a fulfilling activity?
- Would you like to be part of an incredible team?
- Do you want to challenge yourself and learn new skills?
- Are you looking to give back to your community?

VOLUNTEER ROLES INCLUDE

Boat crew | Shore crew | Fundraising
Events and social media
Launch vehicle drivers | Admin support
Finance Manager

OPEN DAYS
Saturday 15 and
Saturday 22
March, 10am-
1pm

info@plirb.org | www.plirb.org | 01424 812 457 | Pett Level Road Hastings TN35 4EH

News from Pett Level Nature Reserve

Wildlife

One of the highlights recently has been the return of kingfishers to the Royal Military Canal (RMC). They have been scarce for a couple of years and it's great to see them back. They have been seen regularly, occasionally a pair, and they even visited the works on Toot Rock bridge! Also spotted along the canal has been the small wading bird, the green sandpiper. In flight these birds appear quite dark, especially in contrast with their sandy coloured cousin, the common sandpiper. Two other features that provide clues to their identity are their distinctive call and their white rump, the latter obvious in flight. In the UK they are scarce winter visitors and are more commonly spotted at Rye Harbour. However, low water levels in the RMC of late has revealed lots of muddy margins which provide the sandpiper with its feeding grounds. Ravens have been seen regularly flying over Pett Level, croaking as they go. They seem to appreciate my attempts at mimicry, and I like to think they occasionally answer back! They are an early breeder, and first eggs can be laid around the middle of February. Another early breeder, the tawny owl, has been hooting around the nature reserve but has now gone quiet, hopefully signifying they are busy nesting. Song thrush have been singing their repetitive song since late January, along with robins. Blue tits have now joined in, dashing around the scrubland scouting out potential nest sites.

Toot Rock Bridge

You may have noticed that work on Middle Bridge has been completed and now I'm pleased to report that the refurbishment on Toot Rock Bridge is also complete. The rotten steels that were below the bridge have been replaced with new ones and the floor of the RMC cleaned up. Sadly, a skip that was provided for waste arising from the works was used by fly-tippers. Their rubbish included polystyrene that subsequently blew into the canal. Fortunately, volunteers were on-hand to pull it out, but it was frustrating and created additional costs.

Work Parties

Regular volunteer monthly workdays have been carried out over the winter, with activities focussed on removing bramble scrub from the area round the old tennis court which is a botanically rich area. Work has also been started on cutting back some of the scrub overhanging the RMC to remove shading and encourage the growth of reed at the margins of the canal.

Proposals for 2025

Work parties will pause in March, although there will be occasional works during the spring and summer to control species including giant hogweed, Alexanders and Himalayan balsam. We are also considering carrying out a spring mow of some of the grassland and tall herb habitats to increase botanical diversity. Longer term management plans include the possibility of restoring the pond next to the old tennis court.

Reminders for your diary

The Annual Meeting will take place in the evening of Thursday 1st May at Pett Village Hall. Ollie Hunter from Future Landscapes Trust will give a presentation on *Nature Based Solutions and Large-Scale Water Management*.

Another of the very successful discos will take place on Saturday 22nd March at Pett Village Hall. The funds raised from this are distributed amongst three local charities including the PLPT. It's a great evening and an excellent way to support local charities.

Also, we are planning the return of the very popular PLPT garden party. This will be held at Marsham Farm sometime in July. More details to follow closer to the date.

Do put these events in your diary. We look forward to seeing you.

Supporting the PLPT

Thanks to all the Friends of PLPT for your support. Please spread the word to your friends and neighbours. If you have an interest in conservation and would like to help the Trust, please do get in touch. Our volunteer work parties are on Sunday mornings from 10.00 - 12.00.

For the latest news follow us on Instagram and Facebook or visit our web site

www.pettlevelpreservationtrust.org.uk

www.STLocks.co.uk  STLocks1066@gmail.com

S.T Locksmiths

Our local experienced locksmiths are fully insured and trained in non-destructive entry techniques to get you back indoors safely.

- No call-out fee
- Free quotes given
- No hidden charges
- Local Family Run Business
- No VAT
- British Standard approved locks

Open 6:00am - 10:00pm
07440323523

Alan Danskin Maintenance & Restoration

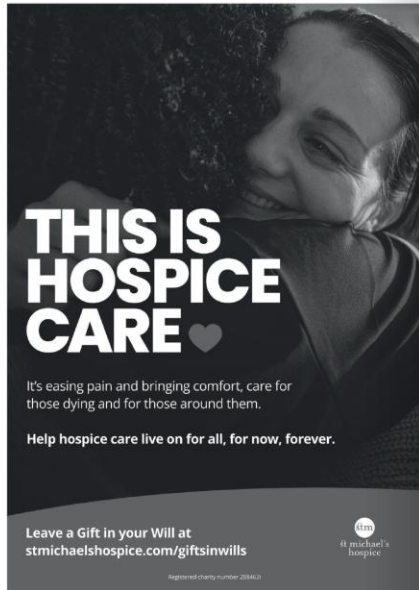
Your local Handyman

Tiling & Flooring
Decorating
Flat Packs & Shelving
No Job Too Small

A professional, reliable & friendly service

25 years experience
Fully insured

Free Estimates
Call Alan on 07748 692168



THIS IS HOSPICE CARE

It's easing pain and bringing comfort, care for those dying and for those around them.

Help hospice care live on for all, for now, forever.

Leave a Gift in your Will at stmichaelsospice.com/giftsinwills

Registered charity number 208602

Pett Methodist Church March 2025

Sorry we didn't get a report in the early newsletters of the year, but I am sure that you have already heard what a wonderful Carols in the Barn we had at Pickham Farm!!! The children's nativity scene was beautiful with the help of the donkeys, and the fact that £531 was raised for Farm Africa as well was wonderful! Our afternoon Carol service and Christmas Day celebration were great!

We have found that having one Sunday a month in the afternoon works well and recently we have been visiting one of our other churches in the Circuit. The Methodist church works in areas called circuits. Ours is Hastings, Bexhill and Rye. So, it is good to go and visit some of our friends at times. We have been to Calvert in Hastings, Ninfield Methodist Church and St Leonards-on-sea.

Coming Up!

Spring Coffee Morning & Auction. This will be on Saturday April 12th, 11am to 1pm. There will be a cake stall, a market stall and a fun auction! Hopefully ARC will be open as well. Any donations and offers of help will be gratefully accepted. Look out for the posters with more information.

Easter Sunday, April 20th at the chapel we will be meeting at 3pm. You are all invited to join us for the worship and an Easter tea!

Last Spring we enjoyed our first PET SERVICE and as it was so successful we have planned another one to take place on Sunday May 25th, 3pm. Put it in your diary!

This will probably involve a walk with our canine friends with time to stop and 'paws' a bit!!! Refreshments afterwards..... of course! We regularly have at least one dog in a Sunday service, as you can tell we welcome everyone!

Wendy Hatch

CLEANER NEEDED

Start date expected to be
Spring 2025

Hourly rate £12.21
(PAYE only)

Hours: 6 hours a week
including weekends

Could be a job share to cover
holidays

Apply to Pett Parish Clerk
Mary Philo
clerk@pettnet.org.uk

01797 270790



Dawn Turner
HHT, MHT

Swedish Massage
Hot Stones Therapy
Reflexology
Indian Head Massage
Traditional Usui Reiki

Home Visits and Gift Vouchers Available

1 Watermill Lane
Pett, East Sussex
TN35 4HZ
01424 812740 / 07901 591696
dawnanturner@icloud.com
massagehastings.com

Registered member of the Federation of Holistic Therapists



BRAMLEY & TEAL
HOLIDAY COTTAGES

Join our fantastic collection
of properties in Kent & Sussex

Do you currently own a property in Kent or Sussex, with a view to venturing into the holiday letting business?
We've got a dedicated team ready to help you, and help make a success of your property!

www.bramleyandteal.co.uk

Part of the TRAVEL CHAPTER

Pett Parish Council

The parish council has received heads of terms for the toilets at Pett Level from Rother District Council, which it is considering. There are a number of points that need to be clarified, including the possibility of repainting the outside, perhaps even with a mural, and it is hoped that agreement will be reached and the toilets opened in the not too distant future. We are looking for a local cleaner for the toilets; there is an advert on page 7 of this issue.

The council met briefly in February, partly to approve the above response to the district council. It also confirmed the appointment of Alan Crouch as flood warden, although Chris Saint is still keeping an interest in some aspects of flood prevention.

The council also approved the response to the county council rights of way survey. There is also a version of the survey that individuals can complete. You will find this on Pettnet (www.pettnet.org.uk), so, if you walk and have a view on footpaths, then please complete the survey. Furthermore, if you are interested in becoming part of a group that monitors the condition of the footpaths in the parish, please let the clerk or myself know.

Following the application by the leaders of East and West Sussex and Brighton and Hove to be one of the initial authorities for devolution; a positive response has been received from the government. For details, see <https://www.gov.uk/government/publications/local-government-reorganisation-invitation-to-local-authorities-in-two-tier-areas/letter-east-sussex-and-brighton>. You can also read what our county councillor and leader of East Sussex Council (and village resident), Councillor Keith Glazier, has to say about how East Sussex could benefit from devolution at <https://content.govdelivery.com/accounts/UKESCC/bulletins/3d11a21>. Furthermore, you can record your own views on devolution at <https://www.gov.uk/government/consultations/sussex-and-brighton-devolution>. This consultation is open until 13 April.

As I am sure people know, 8 May is VE Day. The council has agreed to purchase special flags commemorating this, which will be flown at the village hall and the church during the week of VE Day. In this connection, as far as I know, no other celebration has been organised in the village. If you feel that something should be organised and can suggest an event that you are willing to participate in running, then please let the clerk or myself know.

It has not been possible to arrange a presentation by Energise Sussex on solar panels and heat pumps, but they will have a stall at the next coffee morning on Wednesday 5 March, at which they will be able to talk to you about energy saving. Incidentally, if you haven't been to a coffee morning, then try calling in: 10.00 until 12.00 on the first Wednesday of every month. As well as tea or coffee (and excellent cakes), there is the village community library and also the jigsaw puzzle library. And it is here that the monthly 500 club draw takes place. And finally on this topic, if you are a member of the 500 club, now is the time to renew, while if you are not a member, then think about joining. It is only £1 a share and you could win £40 or one of the lesser prizes. For more information or to join, contact Philippa Strickland (pstrickl@icloud.com) or Carol Pecorini (carol.pecorini@googlemail.com). Our thanks to them for continuing to run this venture that provides support for the village hall.

Each year we have a parish meeting, at which parishioners can raise any topic. I usually give a report on the year past and we also have a speaker, as well as light refreshments. This year's meeting is provisionally on Tuesday 15 April and we have yet to confirm the speaker. More details will be included in the April issue of the parish news and on Pettnet.

Finally, I have, sadly, to report the death of Hilary Glenn, who was born in the village and lived here all her life. Her father was Cecil Webb, who was one of the founders of the Flower Show. Our sympathy goes to her family.

David Penfold, Chair, Pett Parish Council



Checkatrade.com
where reputation matters

LOCKSMITHS
www.surelockhomeshastings.co.uk
01424 538013 | 07535 51112
Email: surelockhomeshastings@yahoo.co.uk

Trading Standards
APPROVED

Surelock Homes - your local locksmiths in Hastings.
We supply a range of locksmith services.
NO call-out charge • OAP discounts • BS3621 locks
and reduced rates for customers with disabilities.

Experienced, fully insured East Sussex locksmith services from Surelock Homes. We are a LOCAL Hastings company delivering a personal and friendly service to both businesses and home owners. DBS/CRB checked and N.C.F.E. Accredited.

FIVE VILLAGES HOME ASSOCIATION LTD
ICKLESHAM, EAST SUSSEX, TN36 4BQ



INDEPENDENT LIVING FOR OVER 60'S

SUPPORT OF SCHEME MANAGERS ON SITE – 24 HOURS
COMMUNAL AREAS AND SOCIAL ACTIVITIES

ONE AND TWO BED FLATS OCCASIONALLY AVAILABLE FOR RENT
BRING YOUR PET

PLEASE ENQUIRE ON 01424 814876
OR VISIT OUR WEBSITE
WWW.FIVEVILLAGES.ORG.UK

RIGHTS OF WAY ACCESS PLAN - PUBLIC SURVEY

East Sussex County Council (ESCC) is responsible for around 2,000 miles (3218 km) of [public rights of way](#). These paths are both in the countryside and urban areas. They are important for enjoying and exploring, for travelling to work or school and for health and wellbeing. They are part of what makes East Sussex a special place to live, work and enjoy.

A public right of way is a path that anyone, by law, has the right to use. There are four types:

- Footpaths for walking, mobility scooters or powered wheelchairs.
- Bridleways for walking, horse riding, cycling, mobility scooters or powered wheelchairs.
- Restricted byways for walking, horse riding, cycling, mobility scooters or powered wheelchairs and horse-drawn carriages.
- Byways for all modes including motorised vehicles.

Every council that is responsible for public rights of way must have a **Rights of Way Improvement Plan (ROWIP)**. This sets out how public rights of way meet the needs of the public, now and in the future. Our current Rights of Way Improvement Plan dates from 2007 and needs to be reviewed. The new plan will be called the **Rights of Way Access Plan (ROWAP)**.

Why your views matter

Pett Parish Council is submitting a parish council response, but your views will also help ESCC to make sure that the new Rights of Way Access Plan meets the needs of everyone in East Sussex.

If you use public rights of way, ESCC would like to know about your experience and how important they are for you.

If you don't use public rights of way, ESCC would like to know what prevents you and what, if anything, they can do to support you in using them.

Your feedback will help to develop the priorities and actions of the **new Rights of Way Access Plan**, which will be produced in 2025. Once the new Rights of Way Access Plan has been finalised and approved by the council it will be published on East Sussex County Council's website. **Please complete the survey by the 14 March 2025.**

It is preferred that you complete this survey online at:

<https://consultation.eastsussex.gov.uk/economy-transport-environment/rights-of-way-access-plan/>

If this is not possible, paper copies can be posted to Sharon Bayne, Blackwood Bayne Ltd, at 8 Herts Crescent, Loose, Maidstone, Kent ME15 0AX or emailed to esccrowap@blackwoodbayne.co.uk or ESCCRoWAP@eastsussex.gov.uk

John Case, on behalf of Pett Parish Council

For further information or questions, please contact ESCC Rights of Way & Countryside 0345 6080193 ESCCRoWAP@eastsussex.gov.uk



NEED AN ELECTRICIAN

TRAVIS ELECTRICAL

- Extra Sockets
- Complete Rewires
- New Consumer Units
- Fuseboards
- Fault Finding



Free Quotations ♦ Fully Insured

Call Luke: 07821 325797



Jennings-Bramly Furniture Ltd



Beautiful furniture dovetailed to your needs

- Drawing rooms
- Dining rooms
- Bedrooms
- Kitchens
- Libraries
- Studies



01424 814620 | 0771 555 4694 | www.jennings-bramly.co.uk | richard@bramly.co.uk

CHURCH NEWS

Building works at Pett Church - What's happening?

Following a tender process last year, a contract has been awarded to George Stone Ltd to carry out the building works. The contractors are due to commence work on Monday 22nd April for a period of 8 weeks. The work will involve the removal of damaged plaster and paint in the Nave and Lobby areas, replastering using lime plaster, allowing a period for drying out, and then painting with breathable mineral paint. Internal stonework repairs to the west window will also be undertaken. In addition, the old light fittings will be removed, and new LED lights will be fitted.

Whilst the works are being carried out the church, for health & safety reasons, will be closed to the public, and church services will be suspended from 22 April until the end of June.

by John Case on behalf of Pett Church PCC



What happens when a Vicar retires?

As I hope you are aware, our Priest-in-Charge at Pett & Pett Level, the Revd Jonathan Meyer, retired on the 7th February and there seems to be a lot of misunderstanding and confusion about the process for appointing a new Rector for the Benefice of Winchelsea with Icklesham, and Pett. Before he retired, Jonathan thought it would be useful to briefly explain the process that lies ahead.

Andrew Blackman presents Rev Jonathan Meyer with a leaving gift from Pett Congregation on the 19 January 2025.

The period during which a parish is left without a priest in post is generally called an Interregnum, although recently it is more often referred to as a "Vacancy". Some people have asked me whether a new person has been

recruited and when they will take over. It has always been the position that, after the end of someone's ministry, there is a period of reflection and prayer before the process of recruitment begins. This is a deliberate policy intended to allow the parish to reflect upon what has been good about the previous ministry and what has not been good. It also allows for the parish to discern how things have changed since the last appointment was made and what changes may have taken place during that time. There is also evidence that a Vacancy or Interregnum of up to 9 months can have a positive effect on parishes because it allows people to co-operate and work together in a different way and often it unlocks particular gifts and energies. It is worth remembering that the previous vacancy in Winchelsea was just short of a year and although a shorter period is desirable it is not unusual for vacancies to extend to around a year.

After my retirement on 7th February that process will begin. As it happens, a parish away day has already been planned from the 15th of February with the aim of considering the future of the parish. This will encompass issues of finance and stewardship, worship and the Christian mission of the parishes. The archdeacon of Brighton and Lewes, who has oversight of this

Continued on page 15.....



No.1
not-for-profit
care home
in Hastings

It's time to
feel good
about care

With award-winning not-for-profit care homes,
longer trial stays and Home for Life funding assurance.

**Finally, care that feels good to Mum.
And to you.**

 **Whitegates**
Westfield
01424 232 396

greensleeves
care

.....Continued from page 13

archdeaconry at present, will be attending. It is expected that he will give some guidance on the process ahead. Once the aims and direction have been ascertained, a Parish of Benefice Profile will be prepared which will become the basis for the recruitment process.

It is important to remember that this parish is one of three for which the minister will have responsibility. Presently it includes the Benefice of Winchelsea with Icklesham and the parish of Pett. There is a legal process underway to form a new Benefice including all three parishes and it is likely that it will be completed by the end of June. As I understand it, the hope is that by then a Parish Profile will have been formally agreed by all three parishes and the process of recruitment, which could be through advertisement or direct approach, will begin.

There is a further complication; the Guild of All Souls are patrons of the parish of Winchelsea. Patronage is passed on in the same way as a property would be via Final Will and testament. The patron will need to be involved in the process of making the appointment and if they are, patrons of a single parish benefice would have complete control of the appointment. In this case it will be a shared patronage of the Guild of All Souls and the Bishop of Chichester who is the patron for Icklesham and Pett. This will mean that our own diocesan Bishop will have considerable influence in how the appointment is made.

The Churchwardens of each parish and the three Parochial Church Councils will all have a part in this process and comments from the congregations will be welcomed over the next few months. It will be my prayer that the process leads to a creative appointment and that it doesn't lead to a long vacancy.

Revd Jonathan Meyer

CHURCH SERVICES DURING THE VACANCY

WINCHELSEA

There will continue to be a weekly Sunday Parish Eucharist at St Thomas's, Winchelsea at 11am, but the 8am Book of Common Prayer Holy Communion service on the first Sunday of the month will not take place during the vacancy.

PETT LEVEL

There will be a Book of Common Prayer service of Holy Communion **on the first Sunday of each month** at the Chapel of Saint Nicholas at Pett Level at 8.30am. Howard Norton will lead most of these.

ICKLESHAM

Services will continue in Icklesham **on the second and fourth Sundays of each month** at 9.30am with Parish Communion. Mostly these will be conducted by David Page who will also preside at Winchelsea at 11am on the same two Sundays.

PETT

There will be a service of Parish Communion at St Mary & St Peter Church, Pett **once a month on the third Sunday**, although there will be an 8 week break from **April 22nd to 30th June** whilst the renovation works on the building are carried out.

There will also usually be a united Benefice Service, at St Thomas' Church, Winchelsea on the **5th Sunday of the month**.

ROYAL OAK FREE HOUSE PETT



PETTFEST 2025
YOUR LOCAL BEER FESTIVAL!
23-26 MAY 2025

**BEER
CIDER
MUSIC
FOOD**

March Live Music

Sun 9th: **Sarah G and the Other 3** - 4:30pm

Sun 16th: **Llama Legs** - 4:30pm

MOTHER'S DAY

Sunday 30th March

Book now to avoid disappointment

Look out for our

Weekday Meal Deals!

REAL ALES - FINE WINES - LOCALLY SOURCED FOOD

LOG FIRES ~ LIVE MUSIC ~ DOGS WELCOME

www.royaloakpett.com ~ 01424 812515 ~ @royaloakpett



PLIRB News - March 2025 - Pett

How good to welcome in spring - lighter and longer days revive the soul and restore our energy. We've had a very productive winter season, both administratively and with training - and we are looking forward to a busy summer!

EGM and new structure

On Sunday 26 January we held an EGM with the single agenda item to elect our new Operational Management Team (OMT). We have worked hard to modernise our structure, training and maintenance regimes and operational procedures. Our management team consists of:

Chair: Steve Hill

Lifeboat Operations Manager: Jo Barry

Lifeboat Administrative Officer: Jo O'Hara

Training Manager: Darren Barry

Fundraising Manager: Russell Gilbert

Trustee Rep: John Brooker

General OMT: Adam Flower, Stuart Homewood

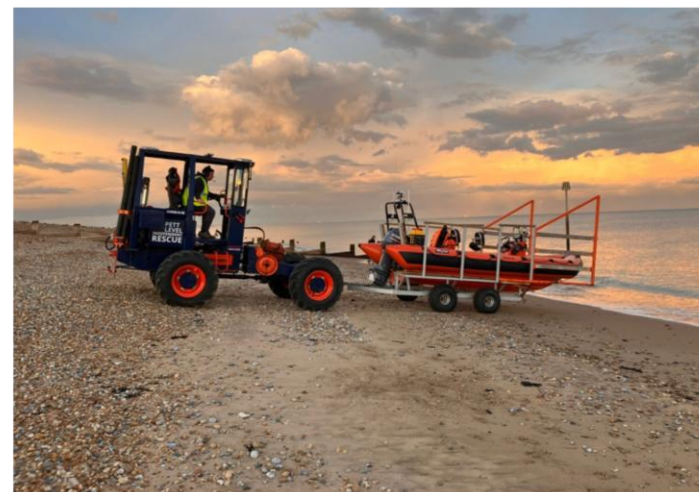
We are looking for a Finance Manager to join the team. If you or anyone you know might be interested, please email info@plirb.org

Recruitment Month

March is Recruitment Month! We are always looking for new volunteers to strengthen and progress our team. We will be holding two Volunteer Recruitment Sessions - an opportunity for anyone interested in volunteering to meet the crew and learn more about getting involved.

Saturday 15 March & Saturday 22 March, 10am-1pm at PLIRB Boathouse - pop in any time!

Joining the PLIRB family offers the chance to learn vital skills and gain qualifications, be part of an incredible team and give something back to your community. Whether boat crew, shore crew or part of our fundraising or organisation efforts - every volunteer becomes part of an essential community asset.



PLIRB Thanks

We continue to be incredibly thankful to everyone who supports us. In the last couple of months we have received generous donations from Kit and Jan McLean and Elm Tree Boot Sale, the Nearly on the Beach Concert, Combe Haven, and Senlac St Leonards Rotary. Every penny we receive helps fund our vital operations and projects. Thank you to everyone who has so kindly donated.

Crew News

Our team continues to grow and we have been delighted to welcome Georgia Phillimore, Kevin 'Woody' Wood and Tyler Moon to our team. All are progressing through their induction programme. We continue to be thrilled with the progress of our Duke of Edinburgh students who are not only completing their achievements, but are committed to training as part of our team.

Boathouse Development Fundraising Campaign

We are full steam ahead with our fundraising efforts to make crucial improvements to our boathouse. The development is essential to future proof our operations and provide flexible accommodation for our future rescue boat (which must be replaced in 2027). We have a HUGE target of £120,000 to raise in the next year. If you can help with fundraising activities, please do get in touch.

Upcoming Events

8 March: PLIRB Quiz Night, 7pm, Fairlight Village Hall

29 March: Pett Slip Buoys singing at Beckley Village Hall Shanty Night, 7pm

23-26 May: PettFest is back! Your local beer festival at the Royal Oak. Live music, great beer and food.

21 June: Fairfest - we'll be running the BBQ and the Pett Slip Buoys are singing.

Contact us: www.plirb.org | info@plirb.org | 01424 812 457

Follow us on Facebook, Instagram and LinkedIn

Proud to serve. Proud to be PLIRB.



Update regarding Natural Flood Management

By the Future Landscapes Trust

For the last year we have been collecting data, meeting experts and consultants, building relationships with organisations and communities, and learning about the bigger issues that surround the flooding at Pett Level.

Habitat Restoration and Leaky Dams

Most importantly, in December 2024, we started our ambitious plan to install Natural Flood Management systems throughout the valley.

This year we are focusing on building over 300 leaky dams and restoring habitats. Year two and year three, we will then start to focus on larger scale landscape changes including swales, scrapes, bunds, tree planting and improving soil structure.

Reports

Our consultants, Green Curves Design, who are a world leading organisation in holistic land design, have curated 4 documents. Rainfall Report, Flood Analysis Report, Marsham Culvert Analysis, and a Whole Valley Solution Design. These are published on our website.

Their findings are clear, which is we need to Slow the Flow of the water throughout the valley, amend the culvert for current day conditions, and question how the water is managed after the culvert.

Aerial videos of example flood events of varying levels of extremity can be accessed on our website and our Instagram.

Flow and Level Meters

We will be installing various flow and level meters throughout the valley. We can use these to record data of pre and post actions to prove that our designs are effective. We are thankful to the Ashworth family for allowing us to install these meters on their key parcel of land. Southern Water have donated a £30k grant and the meters which we believe shows a level of responsibility and engagement – and we thank them for their continued involvement.

Biodiversity and Water Monitoring

We have contracted Barry Yates (former manager of Rye Harbour Nature Reserve for 40 years) and Andy Dinsdale from Strandliners to undertake the biodiversity and water monitoring. Again, to prove the positive impact our actions will have.

We will hold another Open Meeting on Friday 6th June 2025. Please do feel free to get in contact. We have all our resources and data on our website: www.futurelandscapes.org.uk



Toby Sims Gardener

"Flowers always make people better, happier, and more helpful; they are sunshine, food and medicine for the soul."
Luther Burbank

07905 019168 • sims.toby@gmail.com

Your life story in a book

A perfect family gift



Share your unique life story with your family & friends

- Professional biographer
- Friendly, personal service
- Short & long book options



Contact Katarina 07982 465351
katarina@lifestoryinabook.com
lifestoryinabook.com

LIFE STORY  IN A BOOK

A and O

Boilers & Plumbing Services

For all plumbing services from air source heat pumps to tap repairs, boilers and heating system repairs

Gas safe registered

Andy Goodsell

4 Rectory Park, Pett Rd, Pett

07809 573389



How would you improve our rights of way network?

Share your thoughts on our countryside's footpaths, bridleways and byways



To complete the survey scan the QR code or visit:

www.eastsussex.gov.uk/rightsofwaysurvey

Charles & Co.

ESTATE AGENTS

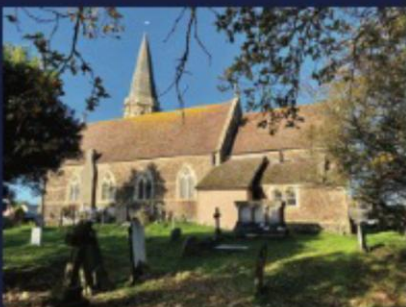
* FREE VALUATIONS by *Charles*

* SELLING IN PETT & PETT LEVEL
FOR 24 YEARS

* PROFESSIONAL, PROACTIVE &
TRUSTWORTHY

Charles & Co.

YOUR LOCAL VILLAGE SPECIALIST



Tel: 01424 259675

Email: charles@charlesco.uk - Web: www.charlesco.uk



PETT FLOWER
SHOW & FAYRE



PETT FLOWER
SHOW & FAYRE



PETT FLOWER
SHOW & FAYRE



PETT FLOWER
SHOW & FAYRE



PETT FLOWER
SHOW & FAYRE

PETT FLOWER SHOW AGM

Wednesday 5 March 2025

7.00 pm

AT PETT VILLAGE HALL.

THE COMMITTEE WOULD LIKE TO INVITE

YOU

STALL HOLDERS, HELPERS AND NEW FACES

TO ATTEND THE MEETING AND JOIN THEM FOR REFRESHMENTS AFTERWARDS.

The 2025 Show will be on

Saturday 26 July

News from St Michael's Hospice

Do you have good quality donations for St Michael's Hospice?

St Michael's Hospice is incredibly grateful for all the quality donations they receive from their community to sell in their seven shops across Hastings and Rother and eBay, which produce vital funds for the Hospice. Most of the donations they receive are beautiful treasures just waiting for a new home. However, some items sadly don't meet the mark. Damaged, broken, or dirty items can't be sold and cost the Hospice a lot of money to dispose of. The Hospice's customers love finding good quality bargains, so they're always looking for: clean kitchenware, modern household items, complete and unbroken toys, games and puzzles, and quality fashion items. Visit stmichaelsospice.info/donate to find out how to donate your good quality items. Thank you so much for donating quality goods and supporting St Michael's Hospice. Your generosity makes such a difference!

St Michael's Hospice Open Gardens 2025 - coming soon

Winter might still have us wrapped up in scarves, but St Michael's Hospice are already dreaming of long, lazy summer days, sat with tea and cake in the beautiful Open Gardens. That's right, their 2025 Open Gardens season is on the horizon, running from May to July, across Hastings and Rother.

Have you considered leaving a gift in your Will?

This March, as part of Hospice UK's legacy campaign, St Michael's Hospice are inviting you to consider leaving a gift in your Will. One in three patients' care at the Hospice is funded by gifts in Wills. These special gifts help ensure that hospice care lives on for all, for now, forever. By pledging even just 1%, you can help secure the future of hospice care in our community. Your kindness will mean that patients receive the care and support they need, when they need it most.

To find out more about leaving a legacy gift for St Michael's Hospice, visit stmichaelsospice.com/giftsinwills

FRESH, LOCAL PRODUCE

Beef, Lamb, Pork
and Chicken raised to
High Welfare Standards
and locally sourced
wherever possible

Wide range of
Homemade Sausages
and Burgers

Fruit and Vegetables
Local Seasonal Produce
Available to order

Locally Made Bread
Local Milk
Range of Groceries

Newspapers Mon - Sat
1st & 2nd Class Postage
Stamps in stock



OPENING HOURS

Monday 8am – 1pm
Tuesday 8am – 1pm
Wednesday 8am – 4pm
Thursday 8am – 4pm
Friday 8am – 5pm
Saturday 8am – 4pm

For News and Offers
follow us on Facebook:
@pettbutchersshop

PETT ROAD, Guestling
Tel: (01424) 812148
Email: theoldbutchersshoppett@gmail.com



KR WINDOWS LTD

Installers of top quality u.p.v.c

*Conservatories ~ Porches ~ Windows
Doors ~ Fascias ~ Soffits ~ Guttering
Replacement Handles ~ Replacement Hinges
Replacement Sealed units*

**All Work Guaranteed ~ Over 20 Years Experience
Fensa Registered Company**

From a replacement handle or double glazed unit to a new conservatory or whole house of windows call **Kevin** for a free Estimate and Advise

01424 754246 ~ 07970 207914
Kevin@beamingmail.com

Local references available

CHURCH SERVICES – MARCH 2025

SUNDAY 2 MARCH

PETT LEVEL	8.30am	Book of Common Prayer Holy Communion Service
WINCHELSEA	11.00am	Parish Communion - Revd Christopher Breeds

SUNDAY 9 MARCH

ICKLESHAM	9.30am	Parish Communion – Revd David Page
WINCHELSEA	11.00am	Parish Communion – Revd David Page

SUNDAY 16 MARCH

PETT	9.30am	Parish Communion – Revd Kay Burnett
WINCHELSEA	11.00am	Parish Communion - Revd Nicholas Reade

SUNDAY 23 MARCH

ICKLESHAM	9.30am	Parish Communion – Revd David Page
WINCHELSEA	11.00am	Parish Communion – Revd David page

SUNDAY 30 MARCH

WINCHELSEA	11.00am	Parish Communion – Revd Ruth Gostelow
------------	---------	---------------------------------------

CHURCHES IN ICKLESHAM, PETT, PETT LEVEL & WINCHELSEA

ICKLESHAM	St Nicolas Church	TN36 4BH
PETT	St Mary & St Peter Church	TN35 4HE
PETT LEVEL	St Nicholas Church	TN35 4BS
WINCHELSEA	St Thomas' Church	TN36 4AB

www.achurchnearyou.com



GEM AUTO
SPECIALISED SERVICES LTD

VOLKSWAGEN GROUP VEHICLE SPECIALISTS

- VEHICLE SERVICING
- VEHICLE MECHANICAL REPAIRS
- VEHICLE DIAGNOSTICS
- ELECTRICAL REPAIRS
- TYRES & WHEEL BALANCING
- TIMING BELT / WATER PUMP REPLACEMENT
- MOT ARRANGEMENT
- EXHAUSTS
- AIR CONDITIONING SERVICE
- BRAKES
- TOW BAR & ACCESSORY SPECIALIST
- CLUTCH REPAIRS

ALL MANUFACTURERS CATERED FOR
 TEL: 01797 224589 MOB: 07842 110871
 WINCHELSEA · RYE
 WWW.GEM-SERVICES.LTD

WE ARE HIRING
 Covering Rye and Surrounding Areas.
 Full And Part Time Positions Available



Country Carers

Flexible Hours
 Competitive Rates Of Pay
 Full Driving Licence Required
 Mileage Allowance
 Paid Holiday and Training

Contact Us Today
 Tel: 01797 223329 (Ask For Nicky) | Email: nicky@country-carers.co.uk
 www.countrycarersltd.co.uk
 Tilling Green Community Centre, Mason Road, Rye, East Sussex TN31 7BE

Recollections: Rosemary Osborn

The ARC has been carrying out oral recordings in recent months with several residents of the area. The object of the exercise is to gather as many memories as we can of that resident's life to help us build a picture of what Pett, Pett Level, Guestling and Fairlight looked like in the recent as well as the more distant past.

A few months ago, I interviewed Rosemary Osborn who has lived in Pett all her life and has a great store of memories of the village. The following is a sample of some of the things she was able to tell me from her early years, painting a clear picture of the village from the 1950's.

Rosemary was born in Oakhurst in Pett. Oakhurst is a large house near the Royal Oak and nearly opposite Gatehurst and was built by the Colegate family. Rosemary's mother was Jessie Colegate, who married a jobbing builder called Leslie Coxeter, originating from Hastings. Rosemary has an older brother called John and an older sister called Joan who both attended Pett School. The school closed the year Rosemary was due to start and her first school therefore became Guestling Primary, the same as many others from the village since that time. Rosemary spent the first two years of her life living in Oakhurst with her grandfather, Thomas Colegate and her aunt, Mary Colegate. Her grandmother had died a few years before. Mary was Jessie's sister and was well known through the village. She was deaf from birth and was known as quite a local character! She lived in Pett until well into her 90's. Very soon Rosemary's parents bought the large plot of land next to Oakhurst and her father built Bower Cottage on it, which they moved into in 1953. Oakhurst remained in the family, her grandfather and aunt continuing to live there.

When her grandmother was alive she ran Oakhurst as a guesthouse, and she also let rooms there. Miss Peters, who was one of the teachers at the school while it was open, and Mr Simpson, who was a local taxi driver, both had rooms there. (Mr Simpson originally came to Pett to look after traction engines but became a taxi driver when tractors took over). In the garden of Oakhurst there was a paint shop, a carpenter's shop and a little tiny dairy. These were eventually knocked down and Korna was built on their footprint, which is in the garden of the house now. Eventually, after Rosemary's grandfather died, her aunt Mary moved from Oakhurst into Korna and Oakhurst was sold.



Grandmother Maud, mother Jessie and baby Mary, 1923

Bower Cottage was built in a big field and that's where Rosemary and her parents and siblings lived throughout her childhood and teenage years. Eventually, when Rosemary married John in Pett church in 1972, they had Midwicket built on a plot in the field, and when her parents retired and got too old to live in Bower Cottage, they had a little bungalow built in between Midwicket and Paxstead. They transferred the name Bower Cottage to this new house and the original Bower Cottage was renamed Paxstead. And so, after that lengthy tale we end up with the current format of houses!



Paxstead c.1982 - before road widened

Rosemary's mother took in guests in the summer, and the same people used to come to stay regularly, usually for the same two weeks in the summer. Among them was John Taylor, who eventually settled in the village at Paxstead and wrote about local history. John and his wife brought their family down regularly. All these regular guests became her parents' friends. Her mother also had RAF personnel as guests during, and just after the war, and Rosemary recalls them living there and polishing the buttons on their uniforms! There were quite a lot of RAF personnel billeted throughout the village during that time. This was due to the Fixer

Stations and the main RAF station that was situated in Fairlight.

It was a busy household when Rosemary was a child, there were always at least two visitors staying so it was always a hive of activity. Rosemary's mother used to deliver milk from the dairy at Gatehurst Farm, (although she never learned to milk the cows because she knew if she did then she would be required to do that job as well!). She delivered milk to the doorstep in all weathers each morning by bicycle, in little pint canisters, and would usually deliver more in the afternoon as there were no refrigerators in those days.

Water came quite late to the village. Rosemary's older brother remembers the village changing quite significantly when mains water was laid on. This helped to make it easier to build houses as previously properties were only built where there was a spring or a well. The digging of wells was recognised as a dangerous and skilled job.

Times may have been quite basic, but the village enjoyed a lively social life.

Rosemary's mother was captain of the village stoolball team for many years and both Rosemary and her sister, Joan followed suit in that role.

Rosemary has many memories of the Flower Show which, at that time, was held on the recreation ground and was a big event, with two large marquees and a tea tent. There were lots of competitions, and activities lasted all day and even went into the night with dancing. The Cedars in which the Ebbutts lived, used to throw a barbeque for the village each year and there was a large annual fete in the Rectory Grounds for many years.



Royal Oak, 1982

There were numerous shops and businesses in various parts of the village; a builder's yard, where Arthur's Close is situated, a garage where Tic Tocory is now and a working forge next to the Two Sawyers. In Pett Level, Joe Goldsmith ran the Market Stores and Miss Broad also had a general store (Sunnyside) right on the junction of Chick Hill. This was basically a tin shed with a veranda, and she also used to sell teas and other refreshments there. The Royal Oak was originally a pub and was turned into a Temperance Inn.

Younger people had the Youth Club, which was originally located in the main hall of the Methodist Chapel. Later it was restarted at the old village hall by Joe Goldsmith. For adults, the village had several watering holes for people to relax in. The Royal Oak remained another local shop until it closed. It was refurbished by Sid Lorenz and reopened in 1972 at which point it reverted to a licensed pub. There were two clubs on Pett Level. There was the New Beach Club and the old Beach Club (later the Smugglers), run by Frank Gostick. Bridge House in Pett Level, where Rosemary and John lived for a short while, was used as the Beach Club during the war because the beach was off limits. The Two Sawyers was also a club. Clubs were very much the thing in those days!

There were very few buses even at that time. However much of what you wanted could be obtained from local shops without needing to leave the village. As well as shopping at local shops, many things could also be delivered. Bread was delivered daily by Harry Boston the bread man, who lived opposite the Royal Oak (though we are not sure where the bread was sourced from), and newspapers were delivered daily by Joe Goldsmith who ran the Market Stores at Pett Level. The Market Stores was located between the bottom of Chick Hill and opposite the public toilets. Groceries were also delivered by Mr Seeley from Icklesham. Rosemary remembers her mum writing her shopping list in an order book which Mr Seeley picked up. He then delivered the shopping the next day (an early form of Ocado?!). Coal was also delivered from Rye and eventually a mobile library came to the village regularly.

There is so much more that Rosemary has told us, but we'll leave it there for now. Thank you, Rosemary!

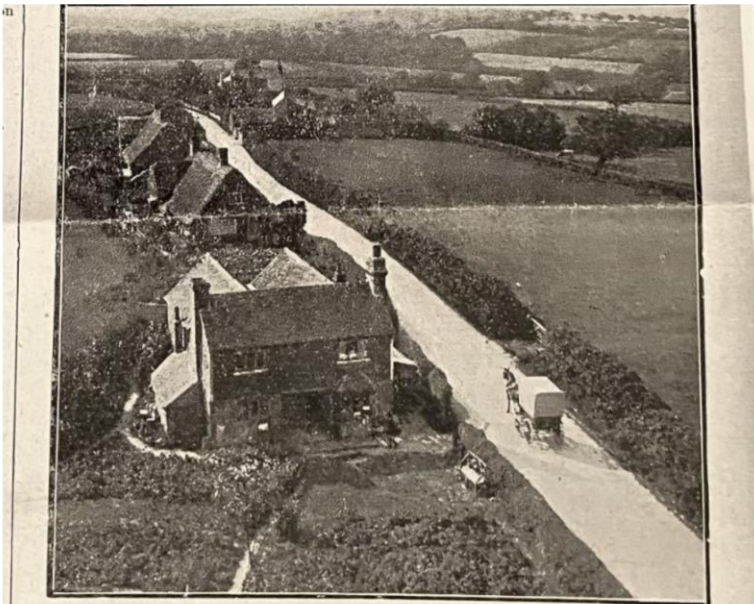
By Paul Petley

Footnote:

The Colegates were a prominent local family going back many generations. Rosemary's grandfather Thomas was a shepherd and worked at Marsham Farm. The following photos give an impression of how influential in the village Rosemary's mother's family were over many years. This is a big subject and definitely a story for another time!



Church steeple repairs in August 1911 showing G.H.Colegate's scaffolding and also two photos with views east and west from the steeple at that time.



The steeple of Pett Church, which was built in 1867, is now undergoing repair for the first time since its construction. Our photos show: (1) The scaffolding, at the foot of which is Mr. G. H. Colegate, who is doing the work; and (2) gives a slight idea of the view to be obtained from the steeple.



VIEW FROM PETT CHURCH
58



PETTFEST

23-26 MAY 2025

YOUR LOCAL BEER FESTIVAL!

ROYAL OAK, PETT

BEER ♦ CIDER ♦ MUSIC ♦ FOOD

RAGATI STRING BAND ♦ THE DEAD RABBITS

PETT SLIP BUOYS ♦ MATTY'S MONDAY CLUB

12 FANTASTIC BEERS & CIDERS ♦ BBQ

HOG ROAST ♦ BELL'E BUONO PIZZA



ROYAL OAK
FREE HOUSE PETT



ROYAL OAK, PETT ROAD, PETT, TN35 4HG

01424 812 515

WWW.ROYALOAKPETT.COM



RUSH WITT & WILSON

**Residential Estate Agents
Rentals & Property Management**

***"Seven offices give your property
unrivalled exposure across 1066 Country"***

Hastings	(01424) 442443
Bexhill-on-Sea	(01424) 225588
Rye	(01797) 224000
Battle	(01424) 774440
Northiam	(01797) 253555
Tenterden	(01580) 762927
Lettings	(01424) 446916
Management	(01424) 430011

rushwittwilson.co.uk



**PETT FLOWER
SHOW & FAYRE**

Saturday 26 July 2025 Fun at the Fayre

The Flower Show Committee are well into the task of planning the schedule with the theme, **Fun at the Fayre**. The theme gives people great scope in the Floral Art section and in Paintings and Photography. And there is plenty to exercise the skills of young people in their classes. Having studied the entry fees charged by other societies, we have reviewed the entry price for the classes. The cost for adults will be 50p for each entry, while entries for the young people's classes will be free of charge with lots of opportunity for the youngsters to win prizes.

We are very pleased to introduce the Arthur Farnes Memorial prize. This will be a gardening voucher for the best exhibit from all the horticultural classes, which will be chosen by the judge for these classes.

The AGM will be held on 5 March 2025 at 7.00 pm in the Catharine Hollman Room at Pett Village Hall.

We welcome feedback on last year's show and any suggestions to improve this year's event. There will be a full report on the 2024 show, which was a financial success, and donations to various local causes will be announced.

All are welcome to the meeting with refreshments to follow.

Philippa M. Strickland
Chairman P&DHS

2025 Gigs and events at The New Beach Club

Sunday March 2nd 2025	3.0pm Entertaining Mr Stone
Saturday March 8th 2025	7.30pm Vexed
Sunday March 23rd 2025	3pm Helter Skelter
Sunday April 6th 2025	3pm Sound Syndicate
Sunday April 20th 2025	3pm 1066 Rockitmen
Saturday April 26th 2025	7.30pm It Takes Two

Bargain Carpets & Floors

Carpet and Vinyl Flooring supplied and fitted.
Same choice as any shop but at up to half the price.



**We can move your
furniture for you
and take away your old carpet.**

**For free home sample viewing and estimates
please call Stuart on 01424 855882 / 07734 659834
or email bargainfloors@hotmail.co.uk**

www.bargainfloors.co.uk

Checkatrade.com
Where reputation matters

Dans Fencing

All types of
fencing installed

dansfencingltd@gmail.com

07900230993

Meet the Seaside Stitchers

Do you love to sew, knit, crochet, embroider or enjoy any other form of textile craft, but find it a bit solitary? Would you like to meet like-minded people who share your enthusiasm for craft? If so, you'll find a warm welcome at the Seaside Stitchers!

We're a small, friendly, informal group which meets every Wednesday at Pett Methodist Church Hall, from 1-4 pm. You don't need any experience to join us, just plenty of enthusiasm, an open mind and a willingness to share ideas and skills.

For more information,
please contact Donna at
donna@ilbert1@sky.com
or Tel: 01424 812185.

We'd love to have you on
board, so please get in
touch!



Gardening Club Notes - February 2025

Our scheduled speakers for February and March were swapped at the last minute due to illness, so we welcomed Pat Argar with a talk on "A Hop Growing Family in East Sussex." Pat grew up on a hop farm in Icklesham, her parents being the 6th generation! All her family were growers in the area and Pat told us there was plenty of competitiveness and rivalry amongst them all.

Hop growing in East Sussex began as early as the 1400s when experts from Belgium and Holland helped drain the marshland. The "Golden Age" however, was the 19th century - Jeremiah Smith of Playden was the biggest hop grower in the entire country at one time, amassing a vast fortune until new government tax regulations resulted in him losing everything. Traditionally, hops were trained to grow up 15ft high chestnut poles planted in a grid system. Women were employed to train the individual plants, known as sets, to climb up the poles - one of our members told me she herself was a trainer! The poles were then taken out at harvest time and laid across cloth bins to be stripped, the hops then measured in bushel baskets, each one tallied or recorded in a book with the grower's name and the number of bushels per grower. Specially stamped incremental tokens were used as interim payment, which would then be cashed in when the hops were sold. Samples of a farmer's crop would be taken to London to the Hop Exchange in Borough to be assessed for quality and a purchase price agreed.

Pat took us through the hop growing cycle, describing in detail the many stages and illustrating the story with both historical and personal references in a very entertaining and amusing way. Hop growing was very labour intensive, Pat remembers her father would work almost round the clock for three weeks at the height of harvest time. There was the initial planting of the sets, then training up the poles and the ongoing maintenance including crop spraying; however, harvest time needed many extra people as pickers. Pat remembers seeing double decker bus loads arriving daily from Hastings and again one of our members told me he was one of them! Others, whole families often, from further afield, would come for a month or so and stay in very rudimentary huts and sheds, but the welcome income would enable them to pay bills, buy their children's shoes, etc., and in the process, they had a summer holiday too! Additional tractor drivers often came from as far away as Australia and New Zealand, taking time out to spend up to a year over here. Once the hops had been picked, they had to be dried, which was a very skilled job as without great expertise the hops could be over or under heated. Then mistakes might be made in the carefully controlled cooling, so they could literally be over cooked and therefore too dry, or undercooked and turn mouldy! The hops would be taken into the roundels in the oasts and once dried would be pressed in bales known as pockets, to make them smaller and contain them for onward transportation to the brewery.

In the late 20th century, as mechanisation of hop growing gathered pace, wirework replaced the chestnut poles and machines replaced people. Brewers began importing hops from abroad, chiefly the US and demand for the homegrown product diminished, all contributors to the demise of traditional hop growing in the UK.

Our next meeting, on Tuesday 11th March at 7.30 in the Catherine Holman Room at Pett Village Hall, will be a talk on unusual vegetables by Laura Brady from the "Wonky Parsnip", Brogdale farm in Faversham.

June Harris

Hastings & Rother Legal Services Ltd

Your local Estate Planning Practitioner & Funeral Planning Specialist
Regulated by the Society of Will Writers & Estate Planners

Wills, Lasting Power of Attorney, Trusts
Fixed Fee Estate Administration (Probate)
Pre-Paid Funeral Plans*
Lifetime Mortgage/Equity Release

All in the comfort of your own home

PEACE OF MIND.....that your wishes will be carried out
PROTECTION*.....for your family against rising funeral cost
AFFORDABILITY*.....through a range of flexible payment options
FLEXIBILITY*.....that you can allocate your plan to someone else if necessary



Peter R Wallace FAIA, MCMI

"Glenthorpe" Warren Road Fairlight TN35 4AN
Tel: 01424 813346
Mob: 07484 116384
Email: handrlegalservices@gmail.com



**COASTGUARD LANE,
FAIRLIGHT, TN35 4AB
01424 813 373**

We are a community Café serving simply the best coffee, tea, cakes and scones and home-made food using local suppliers and local staff.
With great views over the channel and a beautiful ambience

Visit our website at: www.coastguardcafe.co.uk

Nature Notes

Once upon a time there was a beautiful wasp with a liking for sugar. The wasp had been given a sharp device to lay her eggs into things so that they were hidden. Some were injected into plants and became galls, and some were laid into other animals. The other animals didn't like that, so they tended to bite and kill the wasps that had the sharp thing. So, the evolution fairy gave the wasp a bag of venom which she could squirt down her egg laying thing to subdue the host of her eggs. The evolution fairy wasn't finished yet though. She made some of the wasps vegetarian and they fed on flowers, called themselves bees and lived happily ever after. But the other animals still hated the wasps so some of them went to live underground and called themselves ants and also lived happily ever after.



Yes, that was a fairy story, and it is certain that the truth is much more complicated and brutal than that; however, the fact is that we have ended up with three groups of insects, evolved from wasps, with a sweet tooth and a sting - wasps, bees, and ants - which as a group are known as the Hymenoptera. Arguably, the most successful group of these Hymenoptera, are the ants.

While the evolution fairy was busy developing the bees, wasps and ants, she was also working on the plants. The plants developed flowers to attract the bees and wasps, and the flowers contained nectar in tubes suited to their preferred pollinator as well as more pollen than was necessary for procreation to feed the visiting insects. This surplus pollen is eaten by the bees to provide the protein they need to develop their eggs and feed their larvae. The wasps continue their carnivorous ways and eat the insects attracted to the flowers.

Some of the fairy dust, however, was spilt on the stems and leaves and resulted in some plants having the ability to exude nectar on stems and leaf joints. This, of course, is where the ants come back into the picture. We all know that if we spill sugar, the ants will find it (though not so easily in our near hermetically sealed homes). So, the reason that some plants have the ability to produce nectar in places other than their flowers, is to attract ants. The reason that they want to attract ants is because - with a sting at one end and powerful jaws at the other - they are still hated and feared by all the other bugs and creepy-crawlies in the forest, and some of those other animals would eat the plant.

Ants are so resourceful and successful, that it has been estimated that their total biomass exceeds that of all other wild animals and equals about 20% that of the second most successful species on the planet - humans. If you, like all the other animals in the forest, hate ants and want to rid your garden of them, you will not succeed. Even if you turn your garden into a desert. Ants are found even in the Kalahari, one of the harshest deserts on earth.

By Alan Kenworthy

**Do You Require
A Little Extra Help...**
Covering Rye and Surrounding Areas.



Country Carers Personal Care – Domestic Help – Transport
Overnight Care/24hr Care – Palliative Care

Stay living at home, keeping your independence
Tailor made to your needs
Available 24/7, 365 days a year

Good CareQuality Commission

Contact Us Today
Tel: 01797 223329 | Email: info@country-carers.co.uk
www.countrycarersltd.co.uk
Tilling Green Community Centre, Mason Road, Rye, East Sussex TN31 7BE



Lyn provides friendly, expert, and professional advice in your own home for:

- Wills
- Lasting Powers of Attorney
- Probate assistance

01424 815 203 / 07802 280 828
lyn@lyncookeassociates.com

Lyn Cooke Associates, Hedgerows,
72 Lower Waites Lane, Fairlight,
East Sussex, TN35 4DD



On behalf of APS Legal & Associates Ltd
Head office: Workshop Turbine Innovation Centre,
Shireoaks Triangle Business Park, Coach Close, Workshop,
Nottinghamshire, S81 8AP
APS Legal & Associates is a member of the Institute of Professional Willwriters

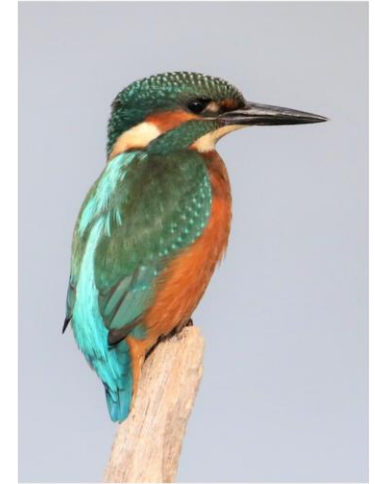
APS Legal & Associates complies with the Trading Standards
Institute Approved IPW Code of Practice
APS Legal & Associates Limited is registered in England and
Wales under company number 05627636
Estate Planning and the provision of Wills are not regulated by
the Financial Conduct Authority

March 2025 - Flying Colours

By Kerry Williams: Communications Officer -
Conservation Sussex Wildlife Trust

Let's get the smug bit out of the way. This January I visited an incredible bird watching and conservation organisation in the Western Ghats, India, run by highly skilled and welcoming environmentalists, spotting 75 remarkable bird species, many endemic to this region. #sorrynotsorry.

A notable feature of these tropical species is their astonishing colour palette; vivid reds, brilliant pinks, and intense greens. There are a few reasons behind plumage colour. Bold colours can be flaunted as a display tactic in males to impress females and shame rivals in competition for a mate or territory. Colour can be used as a camouflage and survival technique, whether blending into surroundings, or by confusing predators with reflective iridescence.



A fellow Brit commented on how our birds don't really compare when it comes to colour, but there's some spectacular species to prove them wrong. Back in Sussex, spring is just starting to peep in; the season where we finally experience those explosions of colour after such a long wait. Aside from an excuse to show off about my grey-escape holiday, I thought a celebration of our most colourful birds was due.

Firstly, Kingfishers. They also reside in India, but they're too bright and beautiful to not make the cut. A wetland and reedbed regular, these fabulous fishers take blue to another level. There's no mistaking their tiny turquoise shimmer as they dart down a watercourse, or perch stock still on a branch, ripple-peering.

A regular on feeders, Blue Tits can be overlooked. Take a moment to appreciate that lemon and azure plumage, merging with navy and tinged with green. Once another common garden staple, Bullfinches are sadly now a rare treat to see. If you spot a male, peachy-coral chest set against muted hues of grey and black, it can't be anything else.

Although wowing crowds with their aerial acrobatics in murmuration, you could be forgiven for thinking Starlings individually are somewhat ordinary. Think again. Up close, and in the right light, Starlings are a mass of beautiful iridescent purples, greens and golden yellows.

Corvids are considered a little plain, but what about an emerald Magpie tail or the sapphire flash of a Jay feather? A Jackdaw's pale iris can seem blue against dark feathers, and sometimes, in low summer sun, jet-black Rook plumage can look purple.

Who needs a Malabar Trogon or a Flame-throated Bulbul? Not me! Well... not for 11 months of the year anyway.

Photo courtesy of Claire Andrews, SWT



Regularly Changing Guest Ales
Weekly and Monthly Social Events
Regular Live Music
Free Wi-Fi

Bar & Kitchen on the Beach
Home of the New Beach Sea Angling Club

Pett Level, Hastings, TN35 4EH
info@thenewbeachclub.co.uk
01424 812080

www.thenewbeachclub.co.uk
[Facebook.com/newbeachclub](https://www.facebook.com/newbeachclub)

Annual Membership

New Members:
Individual: £27, Joint: £47

Existing Members:
Individual: £25, Joint: £45

Yoga for All with Robin

in Fairlight End Garden, Pett Village Hall, and Fairlight End Studio, Pett

Enhance your fitness AND your sense of calm and well-being in beautiful surroundings

Classes will be held in Fairlight End Garden when weather allows, and in Pett Village Hall and Fairlight End Studio when it doesn't!

Classes are Mondays 6-7.30 pm and Thursdays 9.30-11 am.

For more details or to book a place simply contact robin@robinhutyoga.co.uk or text 07446980721. More details on <https://www.robinhutyoga.co.uk>

Private and home training also undertaken

*International Yoga Alliance Diploma and Premier Training International Diploma. 10 years' teaching experience.

National Trust Rye & District Association | Monthly Flyer

We offer a range of enjoyable events each month to members and non-members of our association. Walks September-June | Talks October-May
Our 5 mile circular walks cost £3 and begin at 10.00am. All walks end with a rewarding pub lunch and a quiz. Our talks with popular guest speakers cover a range of topics and are held from 2.00pm at Brede Village Hall, and cost £5 for members/£10 for non-members – including refreshments.



Walk & Pub Lunch | New Inn, Winchelsea Thursday 13 March



Our March circular walk begins and ends at The New Inn in Winchelsea. The walk will take in the old town of Winchelsea, New Gate and the Town ditch, the 15th-century manor house at Wickham Manor now occupied by the Charles Palmer vineyard, plus part of the Old Military Canal, and maybe the beach at Pett Level depending on the weather!

AGM & Talk | Historic & Dickensian Rochester Thursday 20 March



Our speaker, Clive Richardson, is a Blue Badge Guide. Rochester's fascinating past holds an important place in the history of northern Kent. The cathedral is a Grade I listed building, while Rochester Castle is the town's other prominent attraction. Dickens spent his early childhood in the area and used the buildings and local characters as subjects in his books.

Spring Lunch | Flackley Ash Hotel Saturday 12 April



This year we return to the Flackley Ash Hotel. A charming privately owned Georgian Country House Hotel set in 5 acres of mature gardens. There is a three course menu, for a special price of £39.50 pp (including coffee, mints and gratuities). A wonderful opportunity for us all to get together and enjoy good food and conversation.

SOME FUTURE EVENTS TO ADD TO YOUR DIARY: Talk: History of the British Fire Service on Thursday 17th April | Outing: Parham House & Gardens on Thursday 22nd May.

Contact: Dee Williams (membership) 07760 115413 membership@nationaltrust.org.uk
Julie Etches (bookings) 01797 225317 julie.etches054@btinternet.com



Hayley's Hounds
Dog Grooming

Fully Qualified and Insured
One-to-One Grooming

SERVICES	FIND US
✂ Bath & Dashed	Darenth
✂ Hand Strip	Fyrsway
✂ Pet Trim	Fairlight
✂ Breed Standard	TN35 4BG
✂ Nail Clip	07715 587489

Find us on Facebook  City & Guilds 



farnsy@hotmail.co.uk
07967 794749
01424 815241

Tara Begbie
MCFHP
MAFHP



Registered Member of the British Association of Foot Health Professionals

Home Visits
For preventative and routine footcare including ingrowing toenails, verrucae, callus & corns

Tel: 07984 451005

Carpets & Soft Furnishings Expertly Cleaned

A local, quality service is guaranteed. We use the very latest equipment and cleaning methods for the best possible results.

FREE emergency stain removal is available to all **Pett** residents!
Just phone **(01424) 871444**
Mike will be happy to take your call

Conquest
Cleaning Services Limited
"Specialist cleaning throughout Kent & Sussex"

Innovation Centre, Highfield Drive, St. Leonards-on-Sea, TN38 9UH
info@conquestcleaning.uk
www.conquestcleaning.org

Members of the National Carpet Cleaners Association, Which? rusted Trader





£12

www.buytickets.at/pettdisco/1522616

70s - 80s
Disco - with bar
@Pett Village Hall
7:00pm - Midnight
Saturday 22nd March 2025
Contact - jo@felton-gardens.com
Raising funds for
Cancer Research, Pett Level Preservation Trust and Pett Church



DISCO VOLUME 3

EVENTS-TRAVEL
 Tel: 01424 402040
 Mob: 07850 237664

Local, Long Distance & Airports
 1 to 8 Passengers
www.events-travel.co.uk

FLEAS, WASPS, BEES,
 RATS, MICE,
 MOLES, PIGEONS

ROTHER PEST CONTROL

R.S.H. CERTIFICATED
 &
 General Property Maintenance
 Fencing – Brickwork
 Roofing

Mr. A.D. Benn

Tel: 01797 226778
 Mobile: 07739 174552

Funnell & Perring
 SOLICITORS

192-193 Queens Road Hastings
 East Sussex TN34 1RG

*EXPERIENCED ADVICE IN A
 FRIENDLY CARING ATMOSPHERE*

We specialise in:

- Wills and Trusts
- Conveyancing
- Probate
- Family Matters
- Child Care Work
- Court Work

Please contact us on
 01424 426287/437081
 for more information

email: law@funnellperring.co.uk

telly addicts
 TV Aerial & Satellite Services

Your Local Satellite Installer and TV
 Aerial Engineer

Telly Addicts install & setup satellite
 equipment in your home, from Sky TV to
 Freeview. Single and multi-room satellite
 installations.

We are based in Hastings and cover East
 Sussex from Eastbourne to Ashford.

Contact: Bruce Rigglesford
07973 263652
info@tellyaddicts.co.uk
www.tellyaddicts.co.uk

FREE AND FRIENDLY
**ENERGY
 ADVICE**

At the Pett Village Hall
 coffee morning

Wednesday 5 March, 10am

Winter warmer giveaways!

We help with problem bills,
 energy saving tips,
 insulation, grants, boiler
 replacements etc.

ENERGISE
 SUSSEX COAST

energisesussexcoast.co.uk

Decorating & Tiling

Redecoration
Restoration
Renovation

Decorating
Tiling
Light Building

Lee Bowdler - 07742 519440
thebowdler@gmail.com

**YEW TREE
STONE
MEMORIAL
MASONS**

UNIT 6, QUARRY FARM, BODIAM, EAST SUSSEX, TN32 5RA

*Specialist Memorial Masons
serving Kent & Sussex*

- New memorials
- Renovations
- Cleaning
- Additional inscriptions

- BRAMM listed
- All memorial fixers are City & Guilds qualified
- 20 year stability guarantee on all new memorials

Tel: 01580 831855
E-Mail: enquiries@yewtreestone.com
Web: www.yewtreestone.com

KP & CO LTD
PLANNING & DESIGN

**ARCHITECTURAL
DESIGNERS &
PLANNING
CONSULTANTS**

DESIGN

- Extensions & alterations
- Conversion of outbuildings
- Loft conversions
- Internal re-modelling
- Building Regulations drawings

RTPI
Royal Town Planning Institute

PLANNING

- ✓ Planning application statements
- ✓ Pre-application advice
- ✓ Listed Building consent
- ✓ Conservation & heritage statements
- ✓ Enforcement issues
- ✓ Discharge of planning conditions
- ✓ Permitted Development advice

ENQUIRE TODAY

Kate Percut BSc (Hons), FRSA, AssocRTPI
01628793360
info@kpandco.co.uk
www.kpandco.co.uk

**Wanedale Pest Control
& Drainage Solutions**

ALL PESTS UNDERTAKEN

Free quote
Fully Qualified & Insured
Domestic & Commercial
Bird Proofing & Cleaning
Affordable Prices
Drain Cleaning & Jetting
CCTV Drain Surveys

01424 256042
07816 220229

wanedalepestcontrol@yahoo.co.uk
www.wanedalepestcontrol.co.uk

La Cucina di Angela

Lanaca of Saint Joseph

In Italy, on the 19th of March St Joseph is celebrated. On this day the tradition is to cook the "lanaca" (or large tagliatella) as a main course, with "zeppole" as a St Joseph pudding. The lanaca is a particular kind of tagliatella made only with durum wheat. In my region (Puglia) St Joseph (being the husband of the virgin Mary and protector of the families) is very popular and celebrated with all the honour the culinary art can offer.

(For four people).

350g lanaca (extra large tagliatelle)

50g breadcrumbs

50g (or more) anchovies

A clove of garlic

A red chilli pepper

50-60g sliced almonds

Salt, extra virgin olive oil, finely chopped parsley

For this recipe you need three pans, and you will need to cook in all three pans at once.

Start with tagliatelle. In the first pan cook the tagliatelle al dente according to the instructions on the packet. While the pasta is cooking, In the second pan fry the olive oil, the garlic, the anchovies, and the chilli peppers and then set the pan aside. Finally, at the same time in the third pan, toast the sliced almonds for a few minutes and add the breadcrumbs until both are a nice brown-bronze colour and become crunchy.

When the tagliatelle are cooked, drain the water and add the pasta to the second pan, then toss it for 2-3 minutes to get flavoured.

Once in the plates, add on top the toasted almonds and breadcrumbs. Serve immediately with a sprinkle of freshly cut parsley.

Buon Appetito.

Hannington-Gilbert & Co Ltd

Domestic, Commercial & Industrial

ELECTRICIANS

Serving your community since 1965.

Advice and estimates free of charge.

Contact us for all your electrical requirements.

Tel: 01424 428696

@: info@hanningtongilbert.co.uk

W: www.hanningtongilbert.co.uk



Proud members of
Checkatrade.com
Where reputation matters



REGISTERED MEMBER
ECA

The Highest Quality Eyewear

Competitively Priced

Frames: Traditional & Designer
Lenses: Single Vision, Bifocal & Varifocal,
Clear, Transitions and Polarised
Computer Glasses

Phone for an appointment - Please bring your prescription



EYEMASTERS

01424 316 117

Inishwood, Pett Road,
Pett, East Sussex,
TN35 4HB

Email:
richard@eyemasters.co.uk

www.eyemasters.co.uk

Pett Village Hall Activities

Monday

Doctor Surgery	9.00am-1.00pm
Bluebells Playgroup	9.30-11.00am
Table Tennis	4.00-5.30pm
Yoga	6.00-7.30pm

Tuesday

Doctor Surgery	9.00am-5.30pm
Pilates	8.30-9.30am
Doctor Prescriptions	12-12.45pm
Pole Dancing	7.15-8.45pm

Wednesday

Pett Painters	2.00-4.00pm
Dance Fitness	6.00-7.30pm

Thursday

Doctor Surgery	9am-5.30pm
Pilates	8.30-9.30am
Doctor Prescriptions	12-12.45pm
Art	12-3.00pm
Short Mat Bowls	3.15-5.15pm
Fitness Pilates	6.30-7.15pm
Lindy Hop (Intermediate)	7.45pm
Lindy Hop (Beginners)	8.45pm

Friday

Badminton	10.00am-12pm
-----------	--------------

For details of who runs each class and how to join see our website - www.pettvillagehall.co.uk

For bookings of the hall please contact Clare at clare@pettvillagehall@gmail.com Telephone 07718 518053.

Doctor's appointments can only be made by contacting The Hill Surgery direct.

Pett Village Hall Annual General Meeting

Thursday 15th May 2025



All aspects of tree care and hedge cutting undertaken: Pruning, lifting, felling, thinning, planting, reductions, dismantling, stump grinding, emergency work, etc.

All aspects of fencing undertaken: Panel, closeboard, post and rail, decorative, contemporary, rustic, concrete, stock, rabbit, gates, etc.

Always happy to consider related work. Contact me for a free, no obligation quote.

Tel: 07432 106220

Web: www.1066treecare.co.uk

E-mail: hello@1066treecare.co.uk

Sarah Bragoli

Food Intolerance Testing



Are you suffering with IBS, Headaches, Bloating, Stomach Pains and Fatigue?

These are just a few of the symptoms caused by food intolerances.

I can carry out a pain free, non-invasive test to help pinpoint potentially harmful foods.

Please have a look at my reviews on Trustpilot 'Sarah Bragoli Food Intolerance Testing'

Don't delay, book today!

enquires@sarahbragoli-fit.co.uk

07810 044750

www.sarahbragoli-fit.co.uk

Based in Friars Hill, Guestling

Handyman

TW Services

Property maintenance, repairs & refurbishment

Fully Insured



Contact:

Mike Mowbray 0756 325 7060
mikemowbray123@gmail.com

P.J. Turner

ALL ASPECTS OF
TREE WORK
CONTRACTOR
MOWING – LOGGING
FENCING

FREE
ESTIMATES

07816 285618



Environment
Agency

MARCH 2025

RYE (HARBOUR)

Date	ORDNANCE DATUM (NEWLYN)			
	High Water			
	Morning		Afternoon	
	Time	m	Time	m
1 SA	11 59	3.9		
2 SU	00 17	4.3	12 35	4.0
3 M	00 55	4.3	13 13	4.0
4 TU	01 34	4.1	13 52	3.6
5 W	02 15	3.9	14 36	3.4
6 TH ☽	03 00	3.4	15 28	2.8
7 F	03 55	2.8	16 34	2.2
8 SA	05 11	2.0	18 03	1.8
9 SU	07 05	1.9	19 55	1.9
10 M	08 49	2.2	21 11	2.4
11 TU	09 49	2.5	22 01	2.9
12 W	10 33	3.0	22 40	3.3
13 TH	11 08	3.3	23 16	3.5
14 F ☽	11 38	3.4	23 50	3.6
15 SA			12 08	3.4
16 SU	00 20	3.6	12 34	3.4
17 M	00 47	3.5	12 58	3.3
18 TU	01 07	3.4	13 15	3.1
19 W	01 22	3.3	13 32	3.0
20 TH	01 44	3.1	13 58	2.9
21 F	02 16	2.9	14 33	2.5
22 SA ☽	02 56	2.4	15 20	2.0
23 SU	03 55	1.8	17 35	1.5
24 M	06 25	1.7	19 06	1.8
25 TU	07 40	2.0	20 11	2.4
26 W	08 39	2.5	21 03	2.9
27 TH	09 29	3.1	21 49	3.5
28 F	10 13	3.5	22 32	3.9
29 SA ●	10 55	3.9	23 13	4.1
30 SU	11 34	4.0	23 54	4.3
31 M			12 14	4.0

Time Zone UT (GMT)

ADD 1 HOUR BETWEEN 31st MARCH & 26th OCTOBER TO ADJUST TO BST

Customer service line

03708 506 506

Incident hotline

0800 80 70 60


Floodline

0345 998 1188

Crown Copyright and / or database rights. Reproduced with the permission of Her Majesty's stationary office and the UK Hydrographic office. www.ukho.gov.uk LIT6460 SE/EAD/0121/E/V1

COUNCIL RESPONSIBILITIES & CONTACTS	
Recreation ground and play area (except the bowling green, sports pavilions, tennis courts and cricket pitch which are leased to the Pett Sports Association)	PPC
Defibrillator and phone kiosk opposite the Royal Oak	PPC
War memorial at Pett Church	PPC
Several roadside benches, noticeboards, and village signs	PPC
Website (PettNet); Pett & Pett Level News Magazine	PPC
Roads (inc Road Markings, Road Signs, Drains, Potholes, fallen trees)	ESCC
Verges & Footpaths	ESCC
Planning (applications, decisions, appeals, etc)	RDC
Refuse & Recycling	RDC
Fly-Tipping & Pollution	RDC
Dog & Pest Control	RDC
Beach Bye-Laws	RDC
Sea Wall at Pett Level	EA
PETT PARISH COUNCIL (PPC) In addition to the above responsibilities PPC can also provide a parish wide view on planning applications. PPC may be able to help you find out who to contact if you have a problem, can help escalate if your problem is not being dealt with, and can assist in lobbying the relevant authorities in the event of continued poor service.	
	
COUNCILLORS John Case 07525 032198 cllr.john.case@pettnet.org.uk Alan Crouch (Vice-Chair) 01424 813145 cllr.alan.crouch@pettnet.org.uk Andrew Dunlop 01424 813368 cllr.andrew.dunlop@pettnet.org.uk Andrew Norcott 07802 729412 cllr.andy.norcott@pettnet.org.uk David Penfold (Chair) 01424 813003 cllr.david.penfold@pettnet.org.uk David Tasker 07733 307992 cllr.david.tasker@pettnet.org.uk Jan Tomalin 07785 550198 cllr.jan.tomalin@pettnet.org.uk	
PARISH CLERK Mary Philo 01797 270790 clerk@pettnet.org.uk Island Cottage, Swan Street, Wittersham, Kent, TN30 7PH	
TREE WARDEN Marcus Foster 07812 024070 mail@marcus-foster.com	
FLOOD WARDEN Alan Crouch 01424 813145 cllr.alan.crouch@pettnet.org.uk	
ROTHER DISTRICT COUNCIL (RDC) 01424 787000; www.rother.gov.uk/residents Councillor Andrew Mier 01424 814178 cllr.andrew.mier@rother.gov.uk Councillor Tim Grohne 07973 543537 cllr.tim.grohne@rother.gov.uk	
	
EAST SUSSEX COUNCIL (ESCC) www.eastsussexhighways.com/report-a-problem 0345 6080190; www.eastsussex.gov.uk Councillor Keith Glazier 07957 377844 cllr.keith.glazier@eastsussex.gov.uk	
	
THE ENVIRONMENT AGENCY (EA) 03708 506 506	
	

VILLAGE CONTACTS			
ARC	Paul Petley	07818 014610	archiveresourcecentre@outlook.com
Badminton	Wendy Petley	07813 633013	ttbadpett@outlook.com
Bowls Club	Mary Saint	813047	mary@saintfamily.net
British Legion	Brian Green	812450	toffee35@gotadsl.co.uk
Cricket Club	Andrew Dunlop	813368	
Dance Fitness	Laura Mitchell	07527 105352	lauramitchell6@sky.com
Flower Show	Philippa Strickland	814384	pstrickl@icloud.com
Gardening Club	Bob Harris	815151	bob.june@btopenworld.com
Guardians of Pett Churchyard	Mike Wilkins	07710 080148	
Pett Churches - Friends	Rev Jonathan Meyer	01797226254	
Pett Level Preservation Trust	Heather Godwin	07977 100296	
Pilates	Theresa Nouch	814370	theresanouch@aol.com
Fitness Pilates	Belinda Weber		belinda.weber9@gmail.com
Pole Dancing	Susan Trimmer		susantrimmerfitness@gmail.com
PVH Committee	Jane Baldwin	07403 256148	jane@mrzen.co.uk
Seaside Stitchers	Donna Gilbert	812185	pettvillagehall.co.uk
Short Mat Bowls	Brenda Kirkham	07444 008034	donnagilbert1@sky.com
Stoolball	Janet Fuller	01303 873227	beekirkham@btinternet.com
Table Tennis	Alan Kenworthy	07835 112566	ttbadpett@outlook.com
Tennis Club	Stuart Ware	07971 662068	petttennisclub@gmail.com
Activate Youth Club	Wendy Hatch	812297	familyhatch1@gmail.com
Village Voices	Wendy Hatch	812297	familyhatch1@gmail.com
WI	WI Secretary		Pettwi1917@gmail.com
Yoga Class	Robin Hutt	813182	robinhutt@btinternet.com
ROOMS FOR HIRE			
Methodist Chapel	Wendy Hatch	812297	familyhatch1@gmail.com
Sports Pavilion	Stuart Ware	07971 662068	sjw@meadowshed.co.uk
Village Hall	Clare Walker	07718 518053	clare.pettvillagehall@gmail.com
New Beach Club		812080	info@thenewbeachclub.co.uk

MEDICAL, CRISIS SUPPORT & ANIMAL WELFARE			
Hospitals & GP Surgeries			
Conquest & Eastbourne Hospitals	0300 131 4500		
Harold Road Surgery	01424 720878		
Hastings Old Town Surgery	01424 452800		
Other Numbers:			
Samaritans	116 123		
Citizens Advice	03444 111 444		
RSPCA Emergency Services	0300 1234 999		
PUBLIC ACCESS DEFIBRILLATORS			
Pett Level - Pett Level Independent Rescue Boat Boathouse			
Pett Level - The New Beach Club			
Pett - Telephone box opposite The Royal Oak on Elms Lane			
Pett - Village Hall			
			
EMERGENCY CONTACTS FOR UTILITIES			
GAS LEAKS	National Gas Emergency Service	0800 111 999	
POWER CUT	UK Power Networks	105	
WATER LEAK	Southern Water emergency service	0800 820 999	

BUS TIMETABLES: 347 and 101

Hastings • Ore • Guestling • Pett

347

MONDAYS TO FRIDAYS except Bank Holidays		SATURDAYS	
	Hols	Sch	
Hastings Rail Station ⇄ Stop E	1330	1510	1510
Queens Road opp. Priory Meadow Stop N	0945 1150 1335	1515 1515	1640 1740
Milward Road Manor Road	0950 1155 1340	1520 1520	1645 1745
Ore Post Office	0955 1200 1345	1525 1525	1750
Ore The King's Head	0957 1202 1347	1527 1527	1752
Guestling The White Hart	1001 1206 1351	1531 1531	1756
Guestling School	▼	▼	1534
Pett Church	1006 1211 1356	1536 1542	1801
Pett Chick Hill	1009 1214 1359	1539 1545	1804

Timetables are subject to change
Check before you travel

Visit: www.stagecoachbus.com or download the Stagecoach app to view live bus times or call them on 0345 241 8000

Pett • Guestling • Ore • Hastings

347

MONDAYS TO FRIDAYS except Bank Holidays		SATURDAYS	
	Sch	Hols	
Pett Chick Hill	0819 0826	1012 1217	1402 1542 1547
Pett Church	0822 0829	1015 1220	1405 1545 1550
Guestling Green School	0829	▼	▼
Guestling The White Hart	0834 0834	1020 1225	1410 1550 1555
Ore The King's Head	0838 0838	1024 1229	1414 1554 1559
Ore Post Office	0840 0840	1026 1231	1416 1556
Milward Road Manor Road	0845 0845	1030 1235	1420 1600
Hastings Queens Road	▼	▼	1035 1240 1425 1605
Hastings Harold Place	0849 0849		
Hastings Rail Station ⇄	0851 0851		
Fairlight Glen			1603
Fairlight Cove Hotel			1609
Pett Level			1615

There are no Sunday or Bank Holiday buses on route 347.

Hols - This bus journey runs on Mondays to Fridays during school holidays only.
Sch - This bus journey runs on schooldays only.

Rye | Fairlight | Hastings | Conquest Hospital

101

Mondays to Saturdays except public holidays		Sundays and public holidays	
	MF	Sch	SSH
Rye Rail Station Stand A	0654 0748	0756 0856	Then 56
Winchelsea Beach Caravan Park	0704 0759	0807 0907	every 07
Pett Level Canal Bank	0708 0803	0811 0911	hour 11
Fairlight Cove Commanders Walk	0714 0809	0817 0917	at 17
Fairlight Coastguard Lane	0720 0815	0823 0923	these 23
Ore Co Op	0725	GG 0828	0928 times 28
Hastings Railway Station	arrive 0740	0852 0843 0943	43
Bohemia Road Fire Station	-	-	- 1947 -
Silverhill Filling Station*	-	-	- 1951 -
Harrow Lane Ashdown House	-	-	- - -
Conquest Hospital	-	-	- - -

Notes MF Journey runs Mondays to Fridays only
Sch Journey runs schooldays only
SSH Journey runs on Saturdays and school holidays only
* Buses terminating at Silverhill stop in Chatham Road
GG Serves Guestling Green School at 0830 and Ore Post Office at 0838.

Mondays to Saturdays except public holidays		Sundays and public holidays	
Conquest Hospital			2045
Harrow Lane Ashdown House			2057
Silverhill London Road			2057
Bohemia Road Fire Station			2101
Hastings Railway Stn stop F	- 0747 0847 0949	Then 49	1749 1855 2106
Ore Co Op	0711 0802 0902 1004	every 04	1804 1905 2106
Fairlight Coastguard Lane	0715 0806 0906 1008	hour 08	1808 1909 2120
Fairlight Cove Commanders Walk	0721 0812 0912 1014	at 14	until 1814 1915 2126
Pett Level Canal Bank	0727 0818 0918 1020	these 20	1820 1921 2132
Winchelsea Beach Caravan Park	0731 0822 0922 1024	times 24	1824 1925 2136
Rye Rail Station	0743 0834 0934 1036	36	1836 1937 2148

For other buses between Rye and Hastings, see timetable for route 100.
For other buses between Hastings and Conquest Hospital, see timetables for routes 28, 29 and 100.

NR On Sundays, buses continue to or from New Romney - see route 100 timetable for full details

Timetables are subject to change
Check before you travel

Visit: www.stagecoachbus.com or download the Stagecoach app to view live bus times or call them on 0345 241 8000



Pett & Pett Level News March 2025

THE LIFE & ART OF ANNIE SOUDAIN

Pett Methodist Church, 8th March, Doors open 2:45pm

A rare opportunity to meet legendary local artist,
Annie Soudain, in an interview with Cliff Dean

Annie's recently published book, *The Marsh, the Sea & the Sky*, and her cards and prints will be available to purchase. ARC Members free. Non-members £5.

